

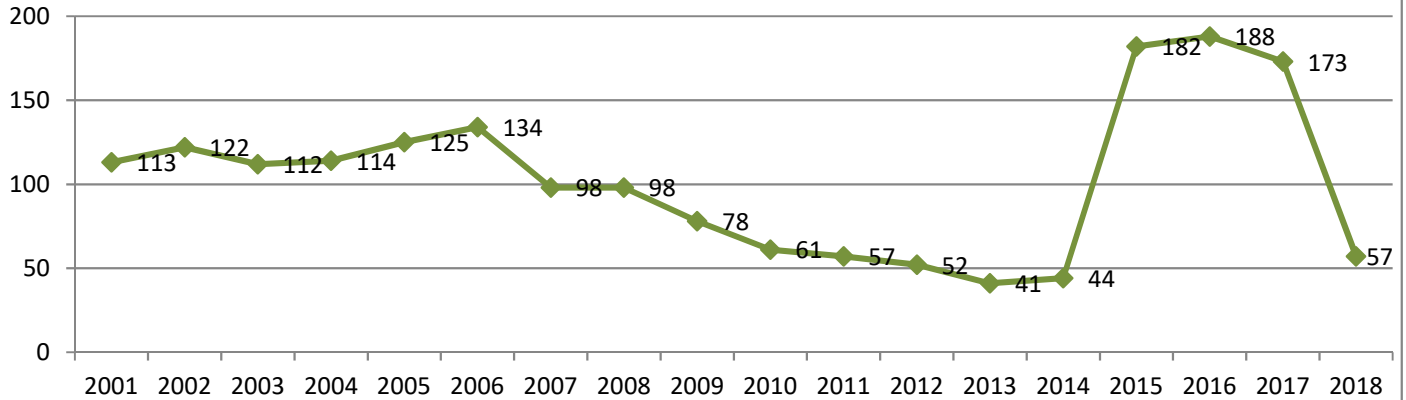


# Bath Community School

118 School Street, Bath, NB E7J 1C4  
 Phone: (506) 278-6000 Fax: (506) 278-6019  
 Grades: K-8  
 Built: 1954

Functional Capacity Data	Student Enrollment	Number of Classrooms	Classrooms In Use	School Capacity	Capacity Rating
based on 29 students per class	142	11	2	319	44.5%

## School Enrollment Trends 2001 to Present



### Physical Description:

- Built in 1954 and is located next to Bath Elementary School.
- Electrical entrance is 600 amps, 240 volt in good condition. There is no capacity available for more circuits.
- Exterior lighting is H.I.D. (High Intensity Discharge)
- Interior lighting is fluorescent in good condition.
- Hot water heating system – Weil-McLain boiler; 1 new burner, 1 old burner.
- There is one ventilation unit installed in 1996.
- Heating controlled by the school.
- Air quality is fair to good.
- Washrooms have original urinals; sinks in good condition. Showers are poor and are original.
- Playground has a soccer field, swings
- Windows are in good condition – Phase one upgrade in 1999.
- Exterior doors are in good condition; 15-20 years old.
- There is a cafeteria in good condition. Kitchen needs to be upgraded.
- Floors are tile in the classrooms (original). The halls were new 3-4 years ago.
- Ceilings are suspended.
- Painting is done according to a summer schedule.
- Interior doors are wood. Panic hardware in the gym. New doors at top and bottom of stairwells in 1998.
- Stairways are enclosed to meet fire separation requirements complete with fire rated doors, frames and hardware.
- Gymnasium floor is made of wood in poor condition. Square footage is 4230 square feet.
- There is no wheel chair access to the stage.
- There is proper access to the roof.
- Corridor walls are plaster.
- There is a Whirltec lift with a capacity of 550 pounds.
- Parking is adequate that is paved and in poor condition.
- Water supply is municipal with backflow prevention.
- Roof does not leak.
- Land ownership around the school is residential and school.
- There is room to expand and the neighborhood is appropriate to maintain a school facility for years to come.
- There are no known environmental concerns.



# Bath Community School

118 School Street, Bath, NB E7J 1C4  
Phone: (506) 278-6000 Fax: (506) 278-6019

Grades: K-8

Built: 1954

---

## Operational Costs

Electricity	\$	29,315.05
Water/Sewage	\$	6,631.88
Garbage Removal	\$	3,453.00
Snow Plowing	\$	2,484.99
Heating Fuel	\$	51,756.52
Natural Gas	\$	-
Cleaning Supplies/Services	\$	4,335.37
Minor Repairs/Renovations	\$	41,849.38
<b>Total</b>	<b>\$</b>	<b>139,826.19</b>

**Operational Costs Per Square Meter** \$ 36.47  
Based on: 3834 Sq Meters

**Operational Costs Per Student** \$ 743.76  
Based on: 142 Enrolment

---



## **Bath Community School**

118 School Street, Bath, NB E7J 1C4

Phone: (506) 278-6000 Fax: (506) 278-6019

Grades: K-8

**Built:** 1954

---

### **Feeder Schools**

Students move to Carleton North High School for grades 9-12. Students from Bath Elementary feed into Bath Community School for the start of grade 6.

### **Catchment Area Boundaries**

North to #11122 Route 105; West to the Saint John river; East to the Aberdeen Parish line; South to the intersection of Carlow and Lockard Mill Roads and #9450 Route 105.

---



# Bath Community School

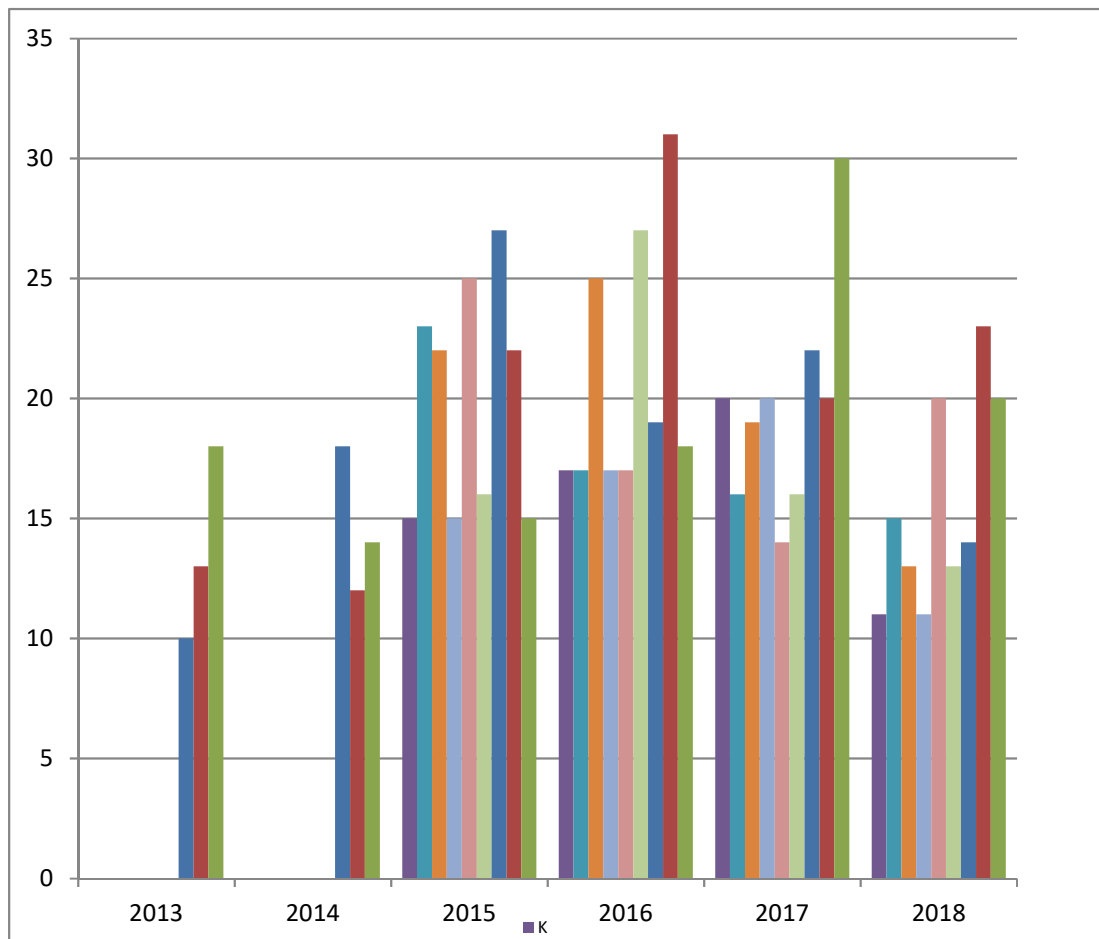
118 School Street, Bath, NB E7J 1C4  
 Phone: (506) 278-6000 Fax: (506) 278-6019

Grades: K-8

Built: 1954

## Enrollment 2013-2018

	2013	2014	2015	2016	2017	2018
<b>K</b>			17	17	16	13
<b>1</b>			23	17	16	15
<b>2</b>			22	25	19	13
<b>3</b>			15	17	20	11
<b>4</b>			25	17	14	20
<b>5</b>			16	27	16	13
<b>6</b>	10	18	27	19	22	14
<b>7</b>	13	12	22	31	20	23
<b>8</b>	18	14	15	18	30	20
<b>Total</b>	<b>41</b>	<b>44</b>	<b>64</b>	<b>68</b>	<b>72</b>	<b>142</b>





## Bath Community School

118 School Street, Bath, NB E7J 1C4  
Phone: (506) 278-6000 Fax: (506) 278-6019  
Grades: K-8  
Built: 1954

### Major Capital and Capital Improvements Projects 2010-2019

School Year	Project	Capital Improvements	Major Capital
2009-2010	Radon	\$ 12,420	
2011-2012	Heating System	\$ 56,284	
2016-2017	Heating and Ventilation	\$ 80,000	
<b>Total</b>		<b>\$ 148,704</b>	<b>\$ -</b>